



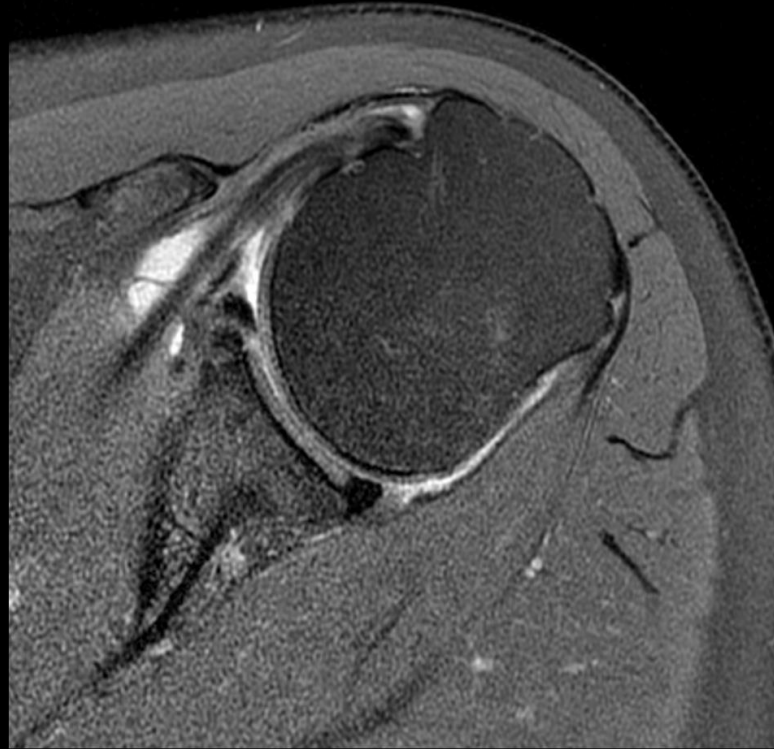
OrthoWorks

AIR™ Recon DL

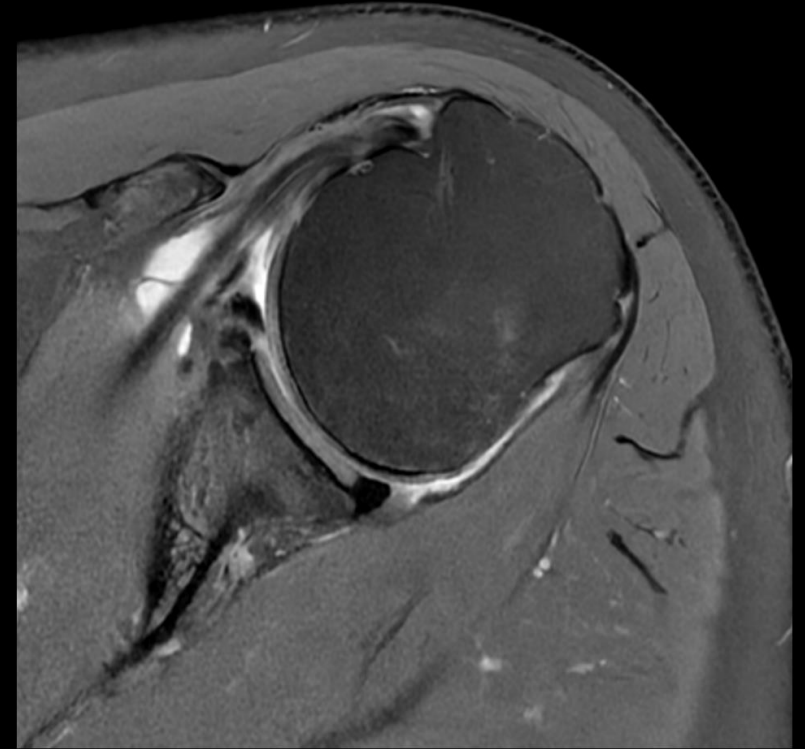
OrthoWorks

AIR™ Recon DL – SNR and Acquisition Times

AIR™ Recon DL demonstrating 26% improvement in scan time and 50% improvement in resolution.



Conventional
0.4 x 0.6 x 3.0 mm
2:58 min

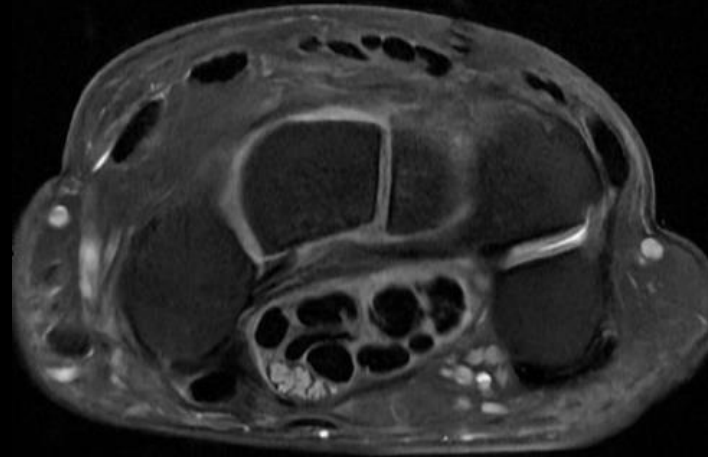
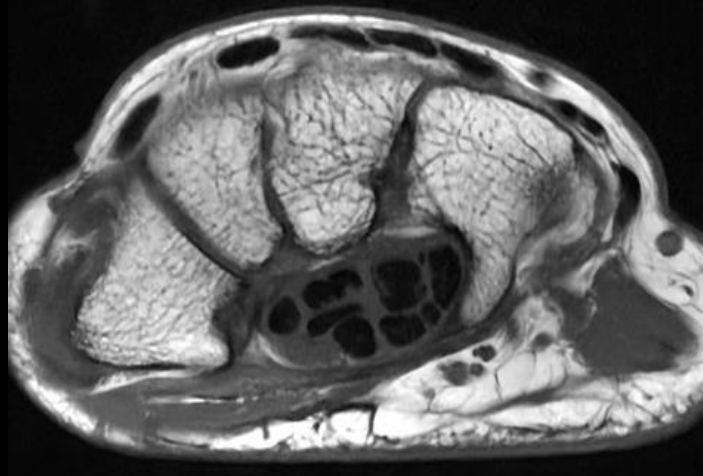


AIR™ Recon DL
0.3 x 0.5 x 3.0 mm
2:11 min



OrthoWorks

AIR™ Recon DL – Short Acquisition Times



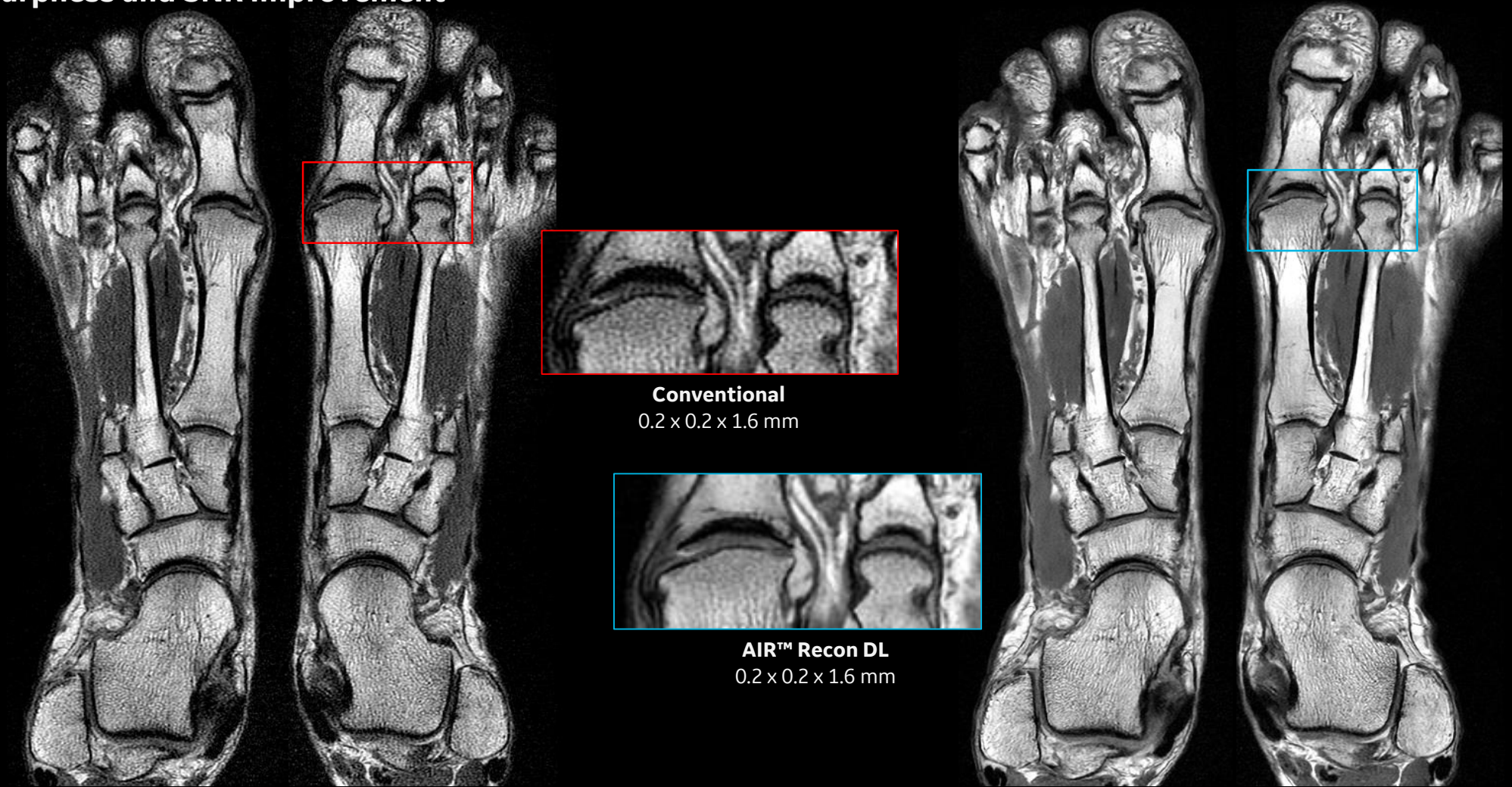
**Total Scan time
6:63 min**



OrthoWorks

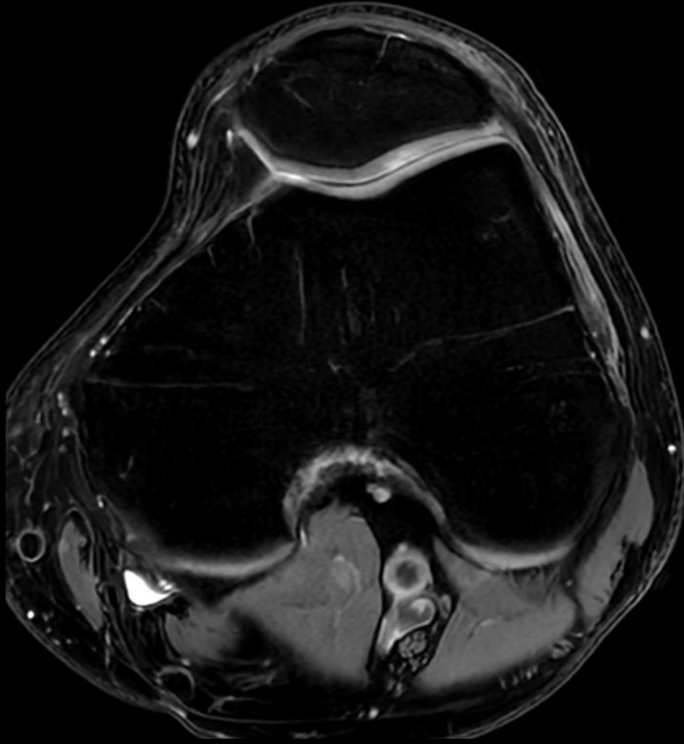
AIR™ Recon DL – Sharpness and SNR Improvement

Same acquisition with and without AIR™ Recon DL, demonstrating an improvement in image sharpness.



OrthoWorks

AIR™ Recon DL – Short Acquisition Times



Axial T2 FatSat
0.4 x 0.6 x 3.5 mm
1:22 min



Sagittal PD FSE
0.4 x 0.6 x 3.5 mm
1:18 min



Coronal PD FSE
0.4 x 0.5 x 3.5 mm
1:40 min



