

VOLUSON LABOR & DELIVERY TECHNOLOGY

ANTICIPATION MEETS ASSURANCE

For those involved in the birthing process, the occasion is filled with anticipation.

The blissful anticipation of meeting the new family member for the patient and loved ones. For you, vigilant anticipation of your patients' needs.

Safeguarding the health and comfort of mother and baby and

creating a positive experience. Incorporating Voluson

ultrasound systems into the labor process can help monitor the baby and mother and help you make more

informed clinical decisions. Through extraordinary imaging, innovative tools to track labor progression,

and on-board patient education, Voluson is

your partner to help deliver a

healthier tomorrow.

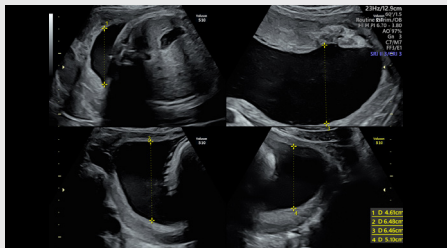


ENHANCED DECISION MAKING

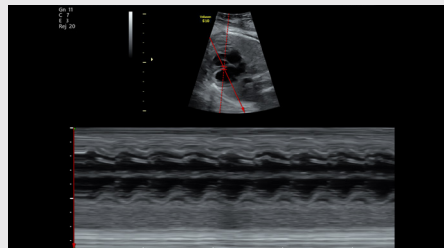
Complimentary tools to support your clinical activities

As a partner in women's health, a Voluson ultrasound system helps provide you with more information for quick, effective decision making and increased comfort levels for the patient and families during the latent and active phases of labor.

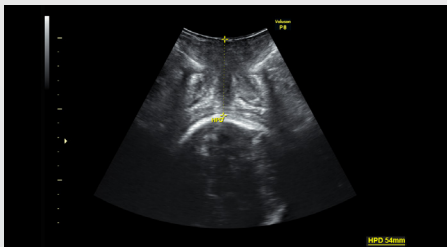
- Use ultrasound to visualize fetal position and placenta location and also evaluate amniotic fluid and fetal cardiac activity
- Objectively measure and evaluate fetal head progression
- Document both ultrasound and manual exam findings in one report
- Enhance patient/family communications with online educational videos
- View clinician video tutorials on SonoL&D Angle of Progression (AoP) and Head Perineum Distance (HPD) Measurement to learn how to properly place the probe and perform the individual measurements



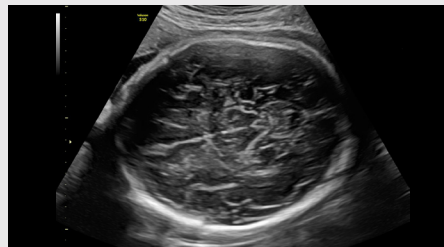
Assess fetal well-being with an Amniotic Fluid Index (AFI) measurement



Monitor the fetal heart rate with M-Mode



Assess labor progression with Head Perineum Distance Measurement

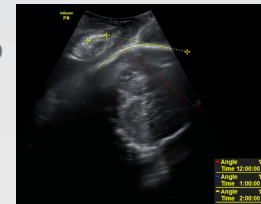


Determine fetal presentation – fetal head vertex position

UNITED IN EXPECTATIONS

Maximize success while optimizing time

Using transperineal ultrasound, SonoL&D helps assess the fetal station through measurements of the AoP.



This semi-automated tool provides objective, quantitative data that can help:

- Support clinical decision-making
- Identify the need for intervention during the labor process
- Provide objective information that can help support a second opinion if necessary

The SonoL&D report offers electronic documentation of the labor process (ultrasound data and manual exam results), helping support quality assurance and standardization.



Designed to fit in crowded L&D suites, Voluson ultrasound systems have sleek, small footprints.

Move easily from room to room thanks to the battery pack. Unplug your system and scan for up to 20 minutes without experiencing power loss or having to re-boot. Quickly scan with ~15 seconds wake time from sleep mode.



Concentrate on your patient, not the system with an intuitive keyboard design providing fast access to frequently used functions.

FOSTERING AN EXCEPTIONAL EXPERIENCE

Empowering resources for knowledge

Give patients and families a clear picture of the fetal progress with SonoL&D's fetal head progression animation onboard the system. This animation visually depicts the fetal movement through the maternal pelvis.



Clinicians can access onboard tutorials to learn how to utilize the Voluson ultrasound system to conduct semi-automated AoP and HPD measurements.



© 2018 General Electric Company – All rights reserved.

GE Healthcare reserves the right to make changes in specifications and features shown herein, or discontinue the product described at any time without notice or obligation. Contact your GE Healthcare representative for the most current information. GE, the GE Monogram, Voluson, HDLive, SonoVCAD and ViewPoint are trademarks of General Electric Company. Tricefy™ trademarks are registered trademarks of Trice Imaging, Inc. GE Healthcare, a division of General Electric Company. GE Medical Systems, Inc., doing business as GE Healthcare.

May 2018
JB57934XX