



# VOLUSON

## ASSISTED REPRODUCTIVE MEDICINE

REALIZE THE POSSIBILITIES

Your success is defined by life. Prospective parents seek out your expertise in order to conceive. As a leader in Women's Health Ultrasound, GE Healthcare understands the impact that infertility has on patients' lives and your business. That's why our Voluson™ ultrasound systems continually push the boundaries of Reproductive Medicine imaging to give you simple, yet innovative tools to help you and your patients achieve their dream of a successful pregnancy.

[gehealthcare.com](http://gehealthcare.com)

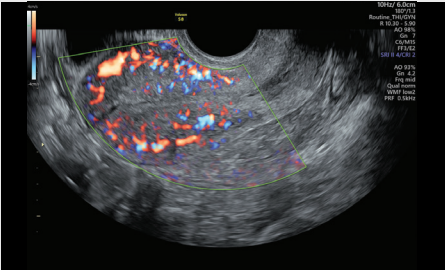
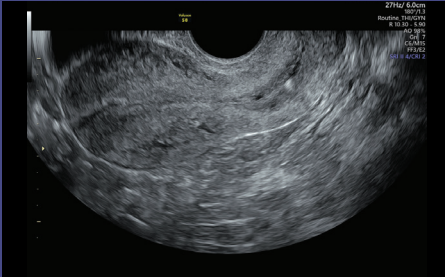




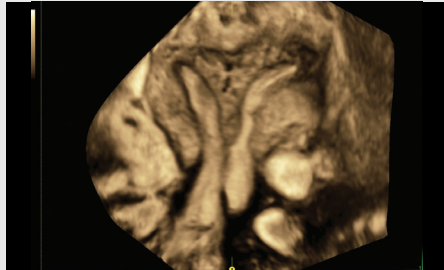
# LIFE-CHANGING ANSWERS

Advanced imaging to help fulfill dreams

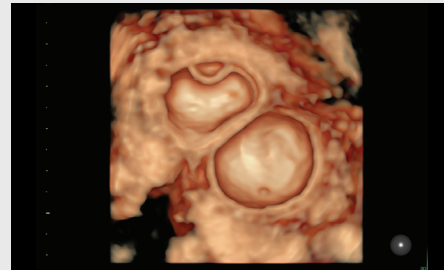
Why can't we conceive? That's one of many questions your patients will pose to you. A Voluson ultrasound system can help you obtain clinical answers to many essential questions, effortlessly. The Voluson Core Architecture is the basis for all of our ultrasounds, delivering exceptional image quality and performance through exceptional resolution and penetration. Resulting in the critical information you need whether evaluating normal anatomy, searching for pathology, monitoring stimulated follicles, or performing retrievals and embryo transfers – all with minimal system manipulation.



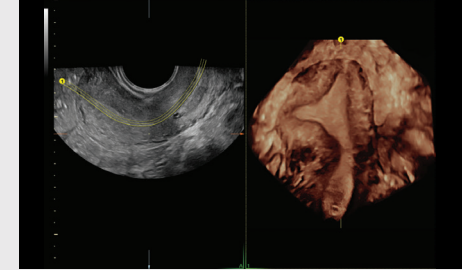
Efficiently evaluate the uterus, ovaries, and adnexae with clear, crisp 2D image quality and exceptional color Doppler sensitivity



Confidently perform routine exams and procedures by accessing additional information for 3D imaging with scan planes not accessible with 2D imaging

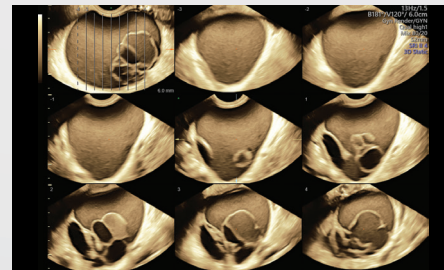
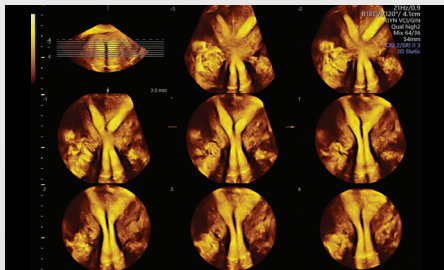


Accurate diagnosis faster through multiplanar and rendered images using advanced 3D imaging tools

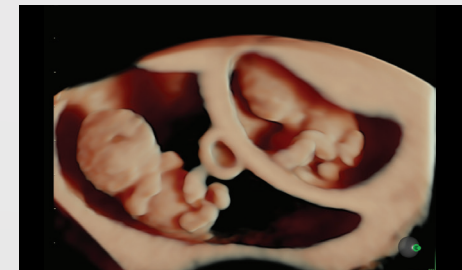


Easy visualization of the coronal plane for evaluation of uterine shape, size and endometrium using SingleView and OmniView\*

Get a more comprehensive view with less effort with Volume Contrast Imaging (VCI) – Area of interest is scanned at a user-defined slice thickness, resulting in increased contrast resolution – Save acquisition and assessment time by reducing your image manipulation time and effort using multiple controls (X-Y-Z axis) by simply drawing a line, curve, poly-line or trace through a structure\*



Ovarian cysts with VCI and Tomographic Ultrasound Imaging

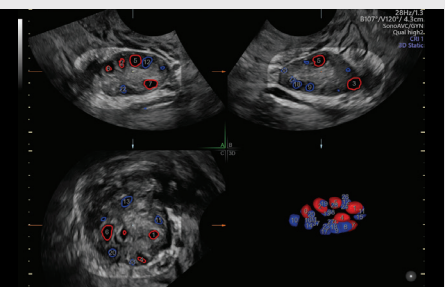
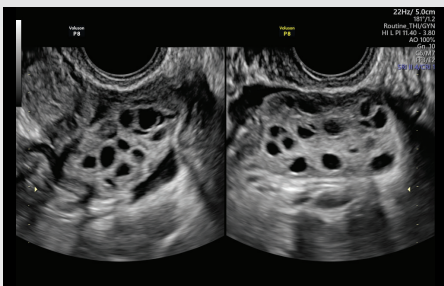


1<sup>st</sup> trimester twins with HDlive™\*

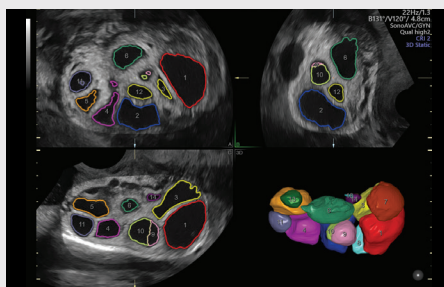
# CHERISH THE VALUE OF TIME

Helping remove obstacles to focus on critical connections

Follicle tracking is one critical aspect in fertility management and a challenge to workflow efficiency when you have multiple patients to see in a short amount of time. Manage your busy schedule while providing quality outcomes with Voluson Sono-automation tools that can help reduce variability between users and scan time.



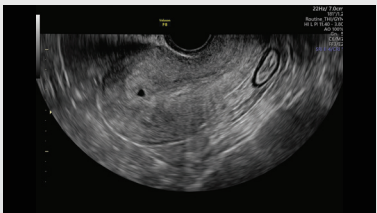
Easily assess and count antral follicles in the ovary with **SonoAVC™ antral** (Sonography-based Automated Volume Count) – automatically count and categorize into user defined size groups



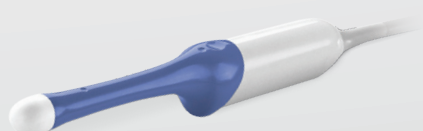
Monitor patient follicles faster with **SonoAVCfollicle** that automatically calculates the number and volume of hypoechoic structures in a volume sweep\*

Get answers quickly while enhancing patient and user comfort by obtaining stunning images with minimal manipulation from a wide range of light, high performance 2D and 3D probes

Wide Sector option for endovaginal probes enabling a wider field of view



Beta View allows the ability to steer the scan plane from the user interface rather than probe manipulation



The Voluson portfolio offers a solution for all practice sizes and needs. Each system is designed to optimize workflow and comfort.

**Voluson Signature Series** – Perfect blend of imaging performance and workflow with superior imaging and productivity tools for busy practices.

**Voluson P8** is a powerful ultrasound wrapped in a small console containing excellent image quality and optimized workflow with fewer buttons to reduce keystrokes.



**Voluson Expert Series** delivers premium image quality with the most innovative diagnostic features to support even your most complex reproductive cases.

Signature and Performance ultrasound systems have fast wake time from sleep mode of ~15 seconds and offer battery pack with 20 minutes of scan time

Text or email images to patients or colleagues directly from the console, for an instant connection with **Tricefy™ inside**



Protect sensitive data with Voluson ultrasound systems advanced security features including **Whitelisting** and **HD encryption**





## LIKE FAMILY – WE'RE HERE FOR YOU

*Expand your expertise and practice*

Join **VolusonClub** – The only ultrasound community dedicated to the education and collaboration of women's health providers

**>25K**  
members



Count on responsive service and support from dedicated staff and programs that truly meet your training, equipment maintenance, transducer protection, and flexible financing

\*Not available on all Voluson ultrasound systems

### Imagination at work

© 2018 General Electric Company – All rights reserved.

GE Healthcare reserves the right to make changes in specifications and features shown herein, or discontinue the product described at any time without notice or obligation. Contact your GE Healthcare representative for the most current information. GE, the GE Monogram, Voluson, SonoAVC and HD*live* are trademarks of General Electric Company. Tricefy™ trademarks are registered trademarks of Trice Imaging, Inc. GE Healthcare, a division of General Electric Company. GE Medical Systems, Inc., doing business as GE Healthcare.

April 2018  
JB57393US